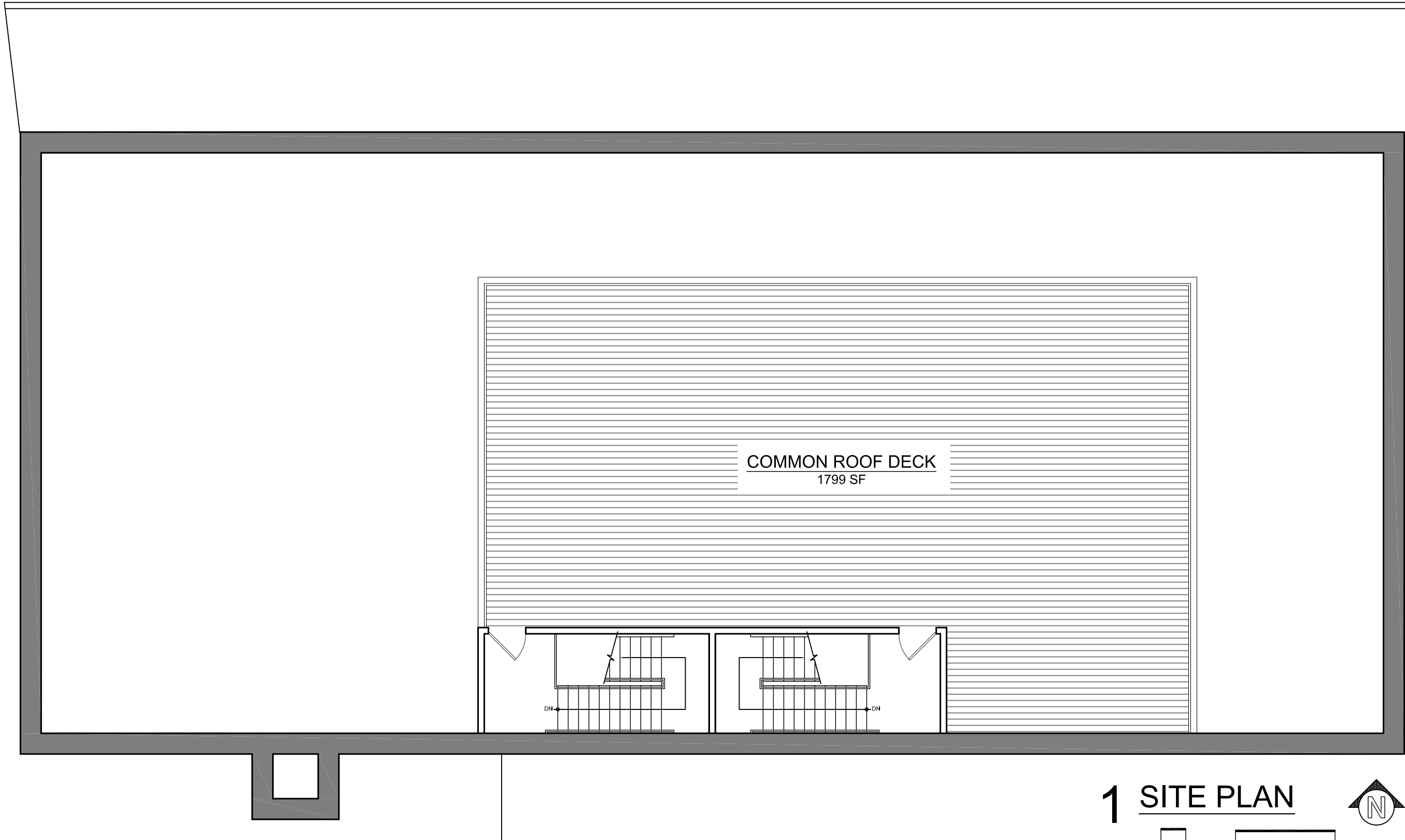


W. CORTEZ STREET

12' PUBLIC ALLEY

N. ASHLAND AVENUE



1 SITE PLAN



0 2' 4' 8' 16'

1038 N. ASHLAND AVE.

CHICAGO, ILLINOIS 60622

© COPYRIGHT SPACE ARCHITECTS + PLANNERS

SPACE

ARCHITECTS + PLANNERS

2149 N. TALMAN AVE, CHICAGO, IL 60647  
P. 312.829.6666  
E. INFO@SPACEARCHPLAN.COM

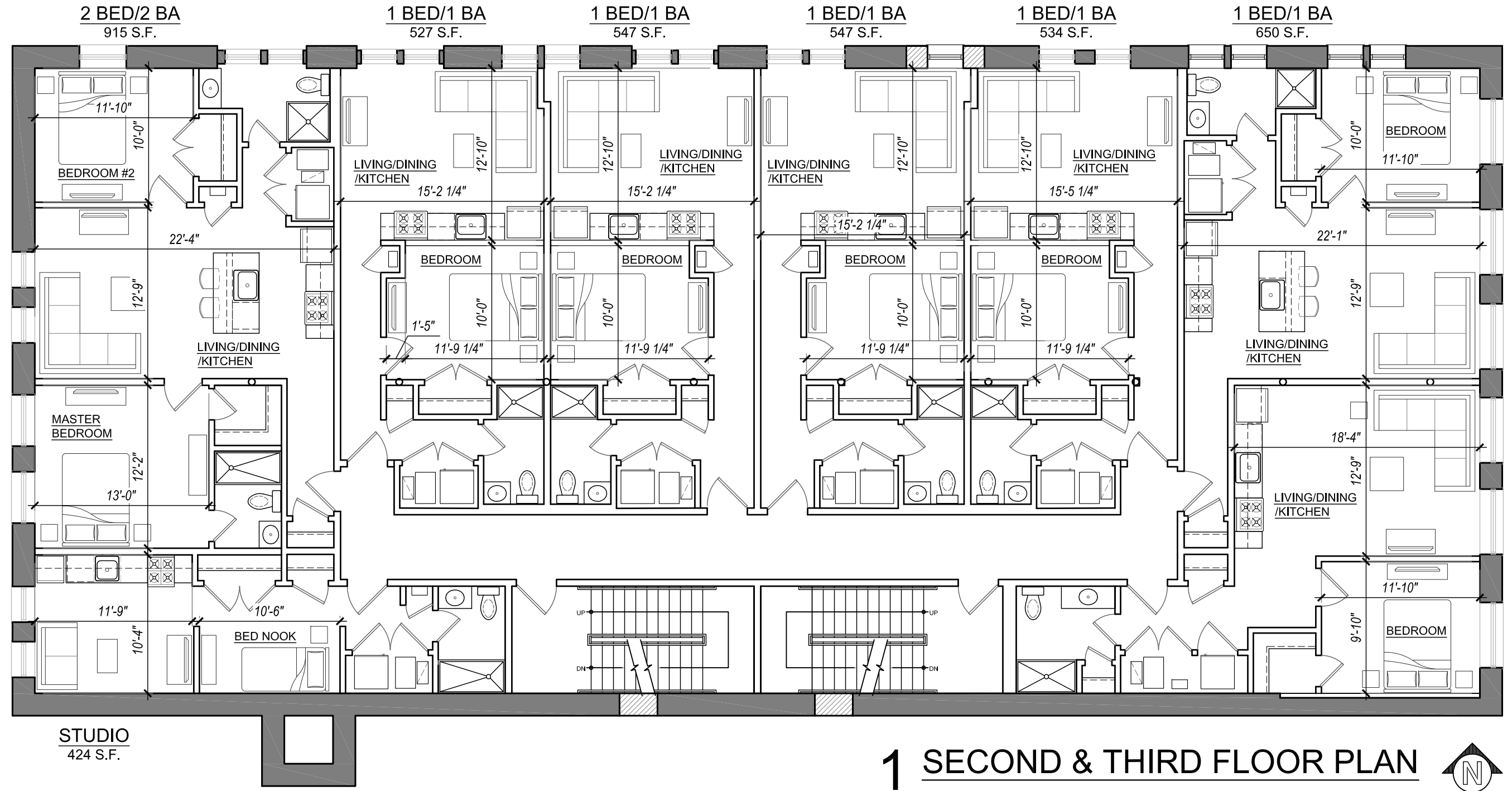
VERSION

V1.0

W. CORTEZ STREET

12' PUBLIC ALLEY

N. ASHLAND AVENUE



2 BED/2 BA  
915 S.F.

1 BED/1 BA  
527 S.F.

1 BED/1 BA  
547 S.F.

1 BED/1 BA  
547 S.F.

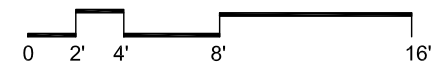
1 BED/1 BA  
534 S.F.

1 BED/1 BA  
650 S.F.

STUDIO  
424 S.F.

1 BED/1 BA  
680 S.F.

1 SECOND & THIRD FLOOR PLAN



1038 N. ASHLAND AVE.

CHICAGO, ILLINOIS 60622

SPACE  
ARCHITECTS + PLANNERS

2149 N. TALMAN AVE, CHICAGO, IL 60647  
P. 312.829.6666  
E. INFO@SPACEARCHPLAN.COM

VERSION  
**V1.0**

© COPYRIGHT SPACE ARCHITECTS + PLANNERS

W. CORTEZ STREET

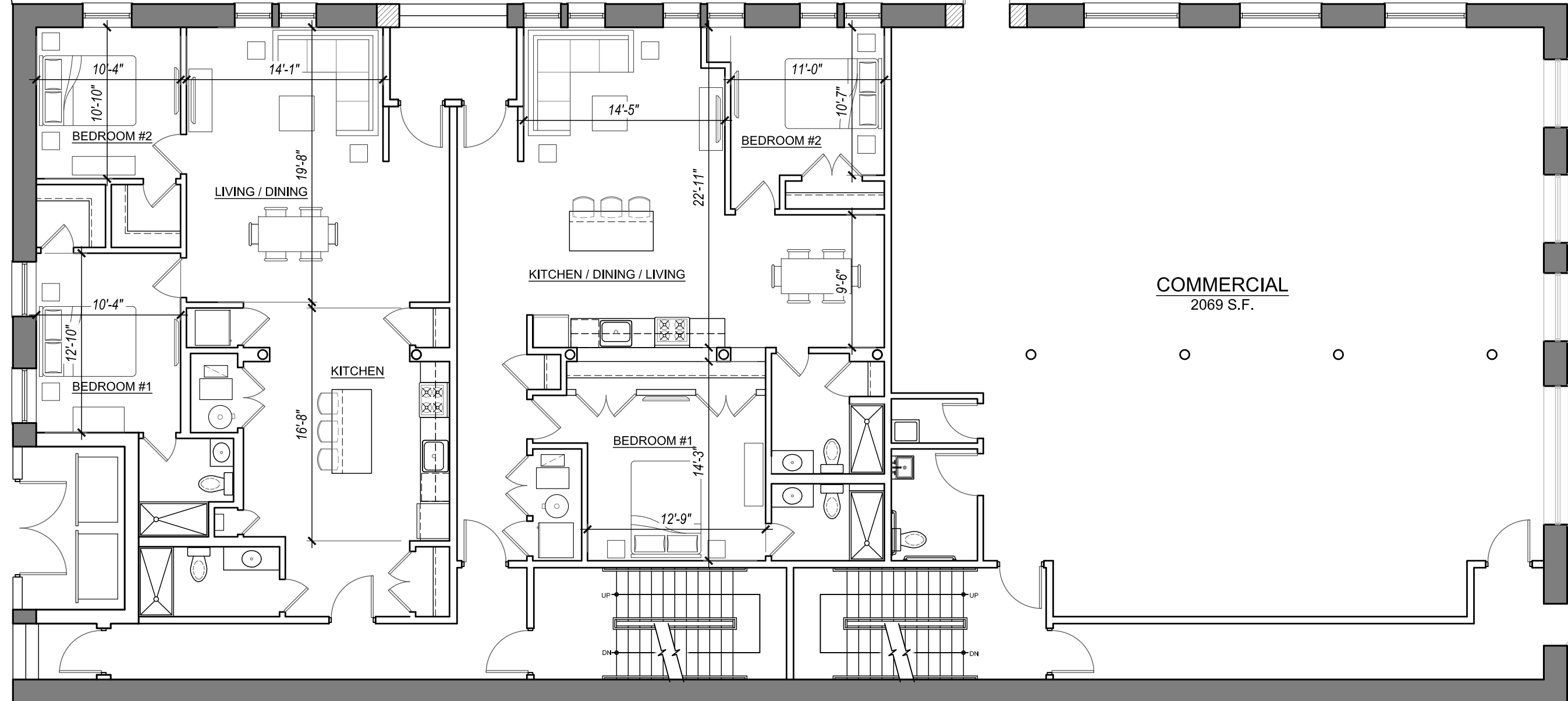
12' PUBLIC ALLEY

N. ASHLAND AVENUE

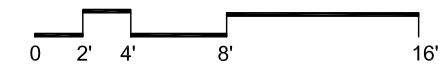
2 BED/2 BA  
1243 S.F.

2 BED/2 BA  
1208 S.F.

COMMERCIAL  
2069 S.F.



1 FIRST FLOOR PLAN



1038 N. ASHLAND AVE.

CHICAGO, ILLINOIS 60622

© COPYRIGHT SPACE ARCHITECTS + PLANNERS

SPACE  
ARCHITECTS + PLANNERS

2149 N. TALMAN AVE, CHICAGO, IL 60647  
P. 312.829.6666  
E. INFO@SPACEARCHPLAN.COM

VERSION  
**V1.0**

