

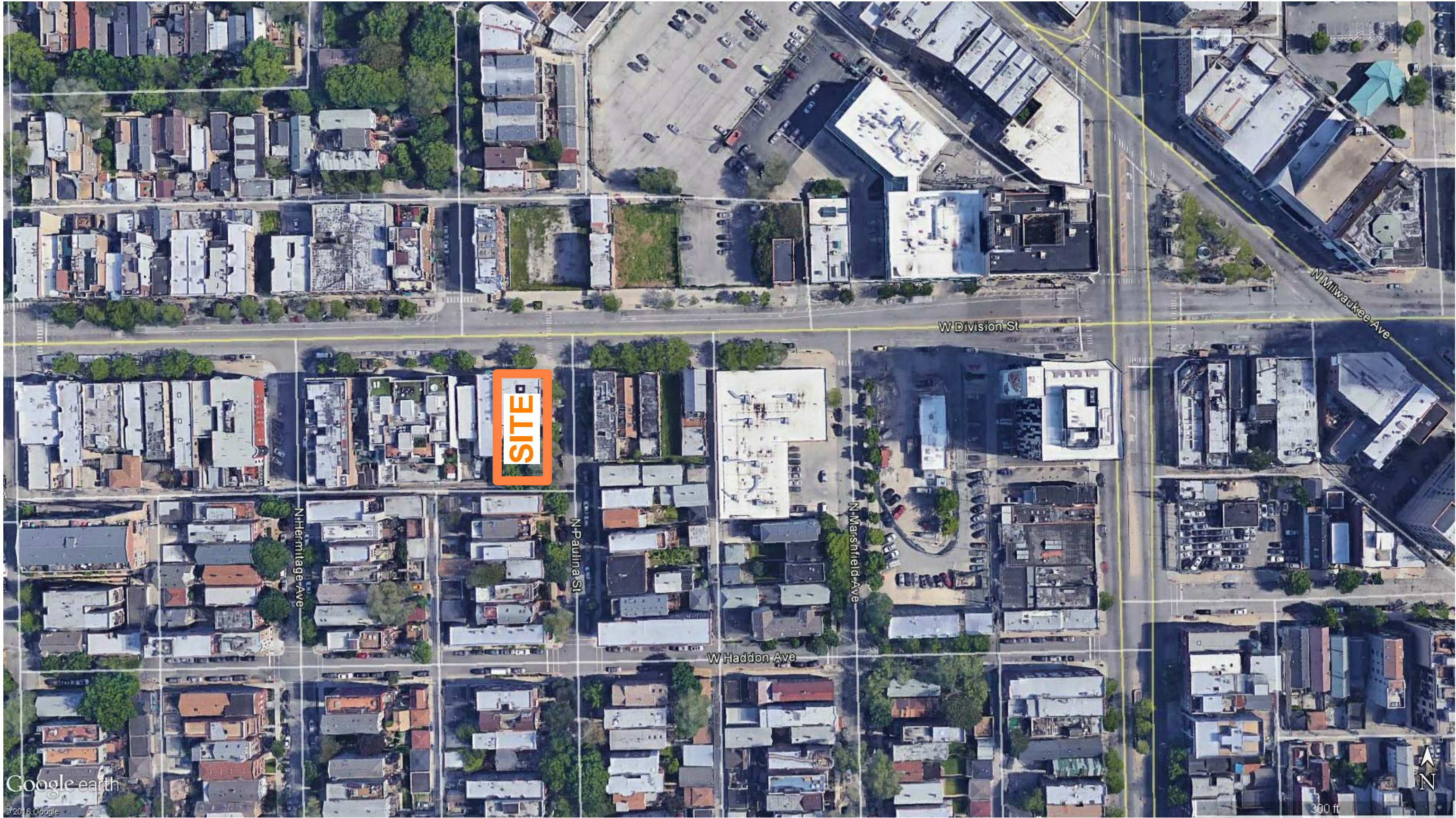


1701 West Division Street

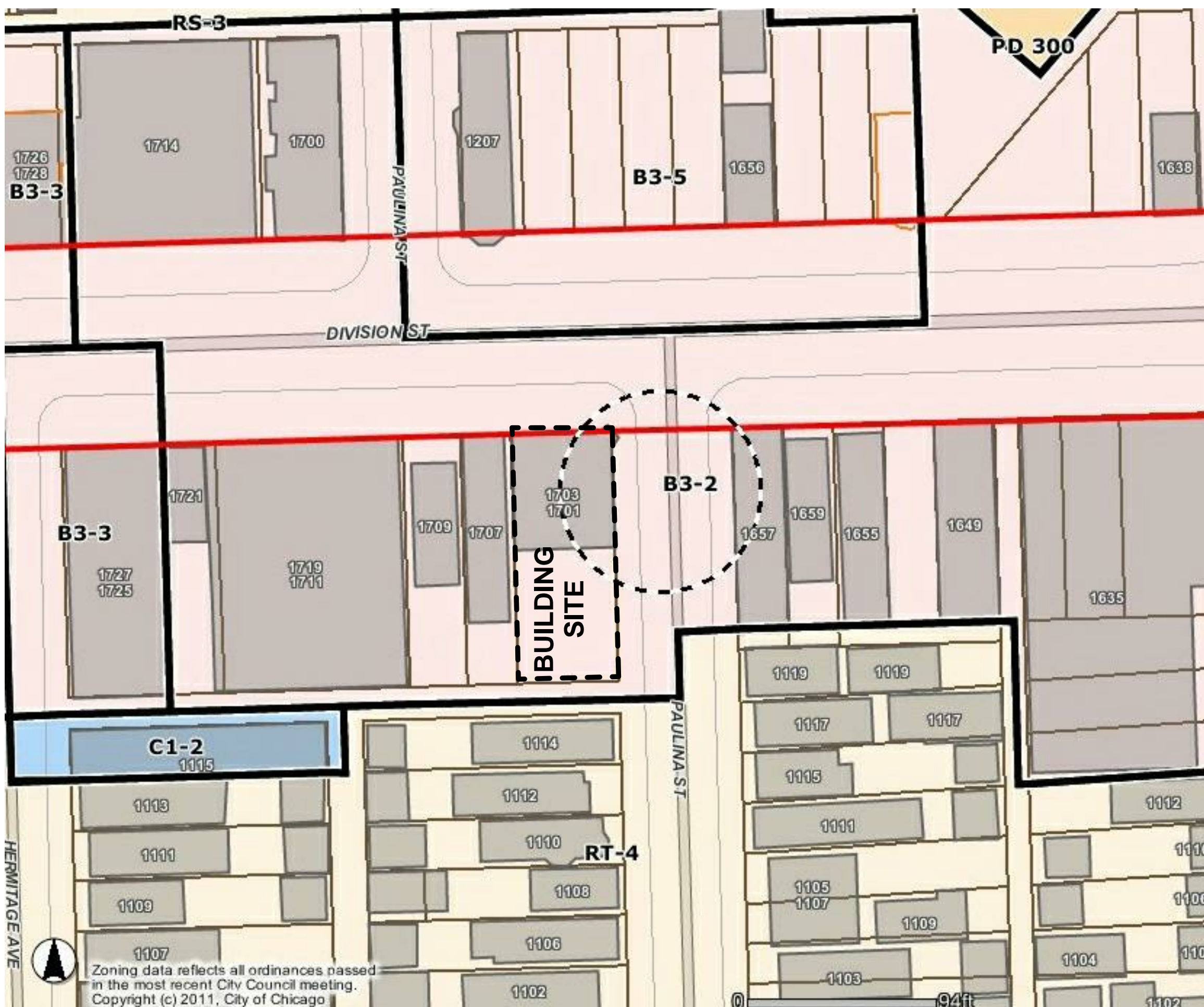
Renovation and Addition

East Village Association
Community Meeting
December 5, 2016

FitzGerald
Associates Architects



Google earth
© 2016 Google



SHARED ROOF DECK FOR RESIDENTS

NEW 5-STORY BUILDING, 8 DWELLING UNITS OVER 1-STORY PARKING GARAGE

METAL STUD STRUCTURE WITH NEW INTERIOR GYPSUM WALLS, FINISHES, APPLIANCES, ETC.

7 SPACE PARKING GARAGE, PRECAST CONCRETE PLANKING SEPERATING 1ST AND 2ND FLOORS

EXISTING 4-STORY BUILDING

6 DWELLING UNITS TO BE FULLY RENOVATED

1ST FLOOR RETAIL TO REMAIN - NOT IN SCOPE

NEW ELEVATOR TO BE SHARED BETWEEN EXISTING AND NEW BUILDINGS

NEW STAIR TOWER TO SERVE ALL NEW UNITS



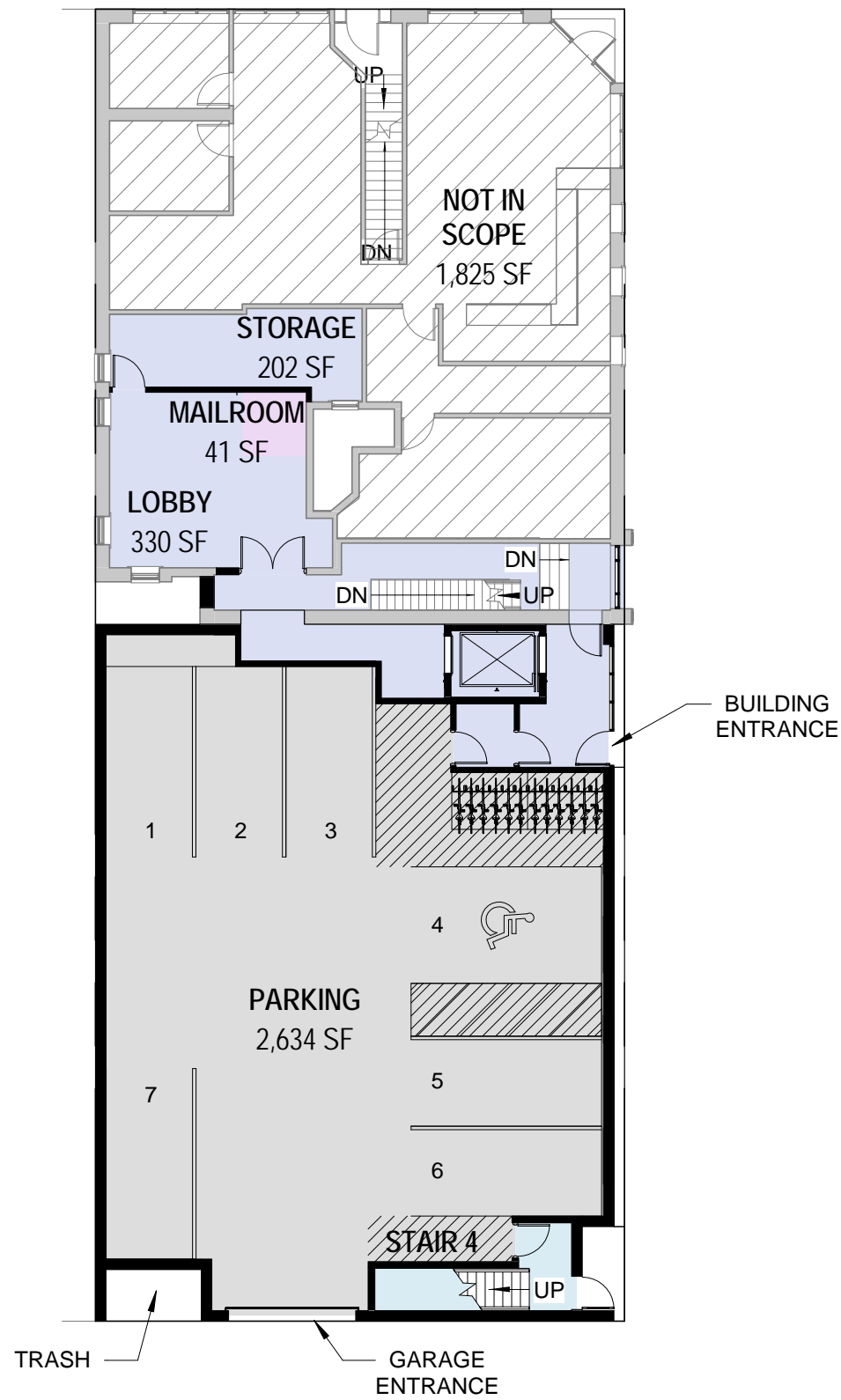


ALUMINUM METAL PANEL

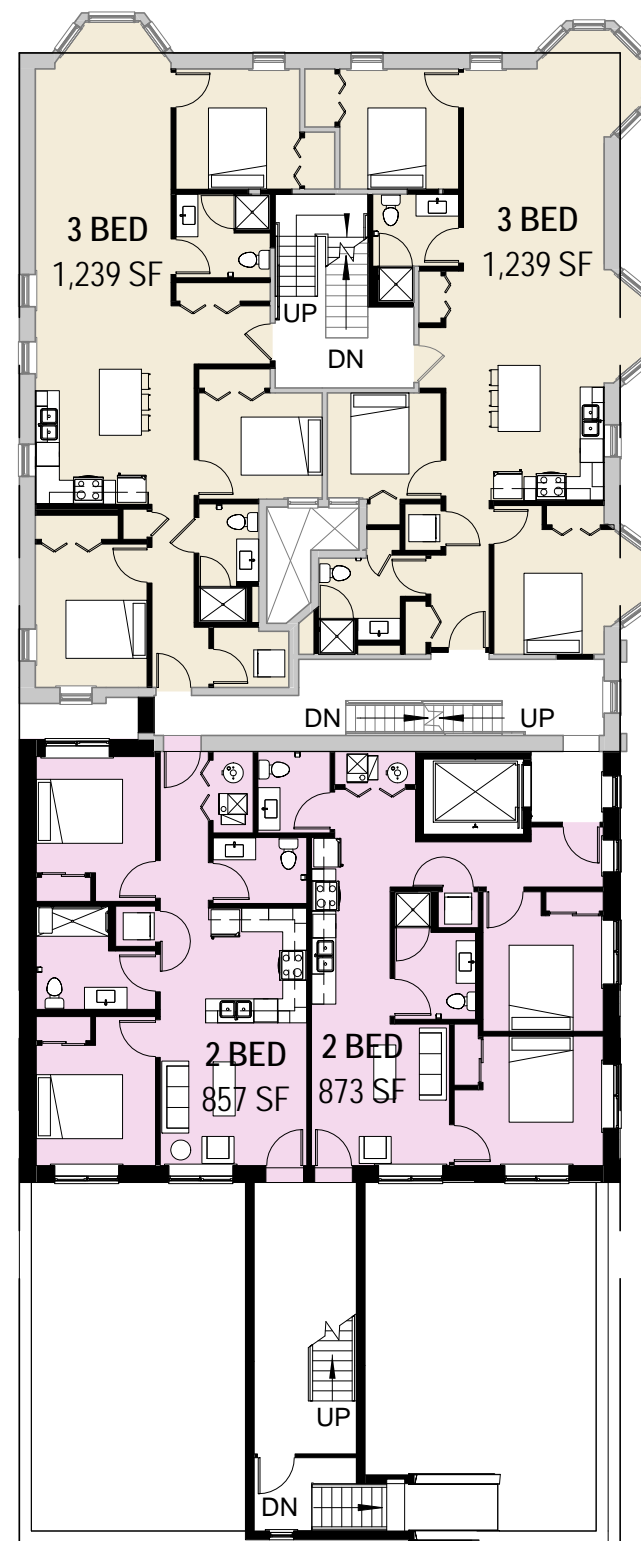
METAL PANEL

CAST IN PLACE
CONCRETE WALL

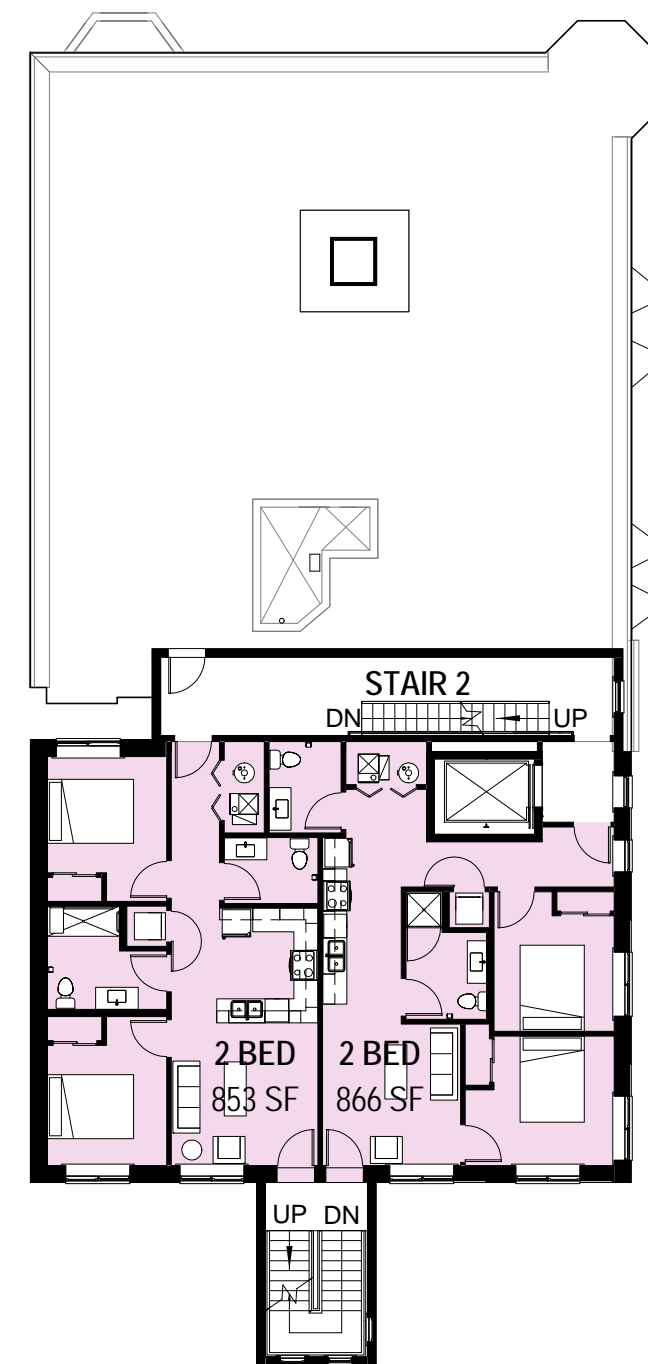




1 FIRST FLOOR
1/16" = 1'-0"



2 TYPICAL FLOOR
1/16" = 1'-0"



3 5TH FLOOR/ROOF
1/16" = 1'-0"

